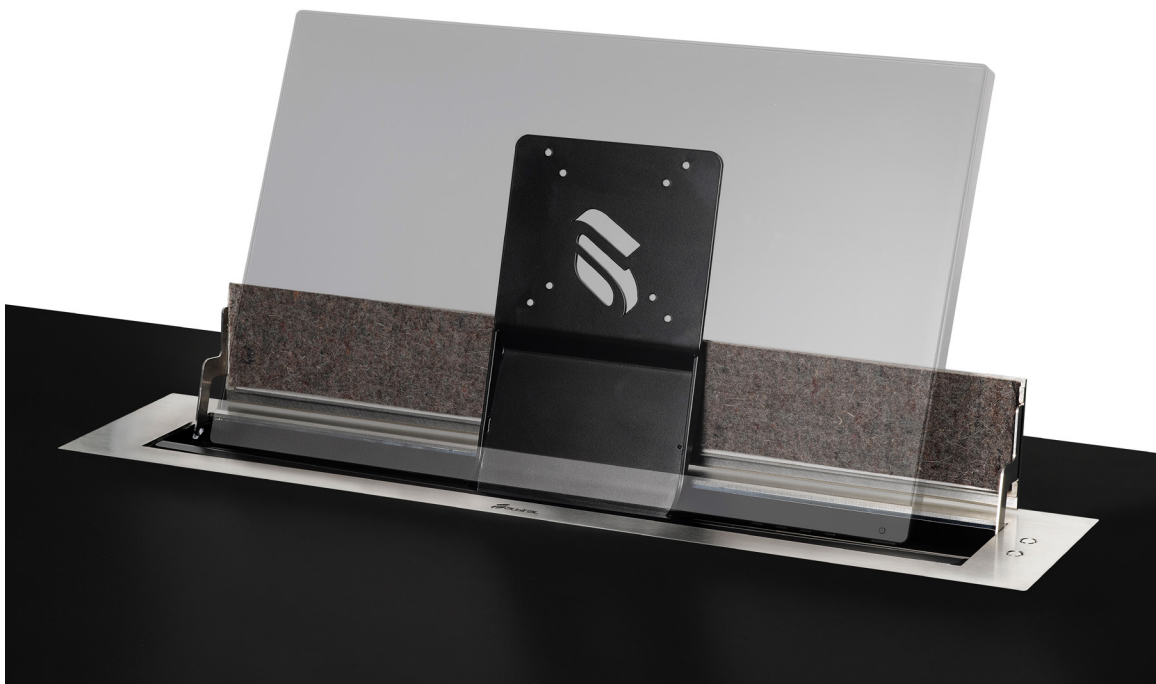




## Universal Lift System (ULS)

Motorised lift for monitors with automatic tilt



ULS is a Universal Lift System allowing to transform any standard screen into a retractable monitor that can be integrated sleekly in conference rooms, auditoriums or training rooms. Specially designed for education applications, ULS helps to create collaborative and flexible learning spaces, increasing the audience immersive engagement. This automated lift system becomes a smart complete solution providing a screen to review and analyse closely documents, data or presentations during lectures or conferences in a convenient and easy way. The elegance of the ULS patented automated movements contributes to set up a distinctive purpose-built environment and the monitors can be stored safely inside the table when not needed leaving the surface clean and free.

### Advanced top features

- Reliable and durable motorised lift system for third party monitors
- Patented system to raise/retract and tilt the device with only one engine
- 20° automatic tilt
- Smooth and silent mechanism
- VESA standard mounting system
- Safety system for user protection
- Remote (RS-422) or local control
- Personalised connectors on cover plate
- AHlink wireless connectivity
- Available for monitors from 15" to 24"

## Universally genuine

ULS is compatible with most pc screens and monitor brands on the market. This motorised lift system can be used for flat screens between 15” and 24”, which remain safely stored inside the table when they are not in use. The support to attach the monitor to the lift follows measurements established in VESA standard mounting system, so a perfect adjustment is absolutely guaranteed.

ULS integrates an internationally patented genuine feature: it is able to perform the raise/retract and tilt movements with only one engine. Activated at just the push of a button, the cover plate opens stylishly and the monitor appears smoothly from the desk driven by a variable speed system which allows the screen to rise quickly and finally adjust carefully at a slower speed to get an automatic and ergonomic 20° working position. The use of a single engine for the whole process makes it more silent and efficient, also reducing maintenance tasks.

## Much more than just a lift

ULS can be intuitively activated using the buttons placed on the cover plate, but they also offer the option of a remote control. The devices integrate AHnet protocol through a RS-422 port, so their raising and retracting movements can be remotely controlled with ease. And these functions can be also managed comfortably through the AHlink app using a wireless connection. These equipments are also ready to integrate even more future improvements, so they include a USB input for firmware upgrade.

ULS is a simple motorised lift, but it also integrates interesting practical features that reveal a keen eye for details. The retractable tab supporting the monitor has been designed with an extra function, as it allows to hide all cables and connectors, helping the fine and clean aesthetics of the table.

Albiral also offers many customisation options that make ULS not just a lift for monitors, but an advanced work tool for users. Different connectivity possibilities can be integrated into the cover plate. The most common and suitable accessories are USB connectors, HDMI retractable cable, power outlet, audio mini-jack, VGA connector or a free added button for extra functions.

## Secure and reliable

ULS systems integrate an advanced and unique security system carefully designed by Albiral to ensure user protection. Extremely sensitive sensors are able to detect any possible obstruction in the mechanism, causing the unit to stop movements immediately. If any object or part of the user’s body is placed somewhere interfering the rising or retracting of the device, the precision system of the unit reacts straight away to avoid any damage.



## General description

ULS by Albiral is a Universal Lift System with cover plate in brushed stainless steel for third party monitors. VESA standard compliant. Two versions available: ULS1 for screens between 15" and 19" and ULS2 for screens between 19" and 24".

The motorised lift rises and retracts the monitor inside the table, offering a 20° automatic tilt. It can be activated and controlled with the buttons placed on the cover plate, remotely through RS422 over RJ45 CAT5 or using wireless connectivity through the AHlink app.

## Product specifications

Product versions	
ULS1	15" - 19" screens
ULS2	19" - 24" screens
Compatibility	
VESA	75 and 100
Engine	
Control Up/Down	Buttons on cover plate
	RS422 (RJ45 CAT5)
Materials	
Cover plate	Brushed stainless steel
Electricity	
External power supply	100-240Vac, 47/63Hz, 12Vdc

Connectivity	
USB for firmware upgrade	
Wireless connection	AHlink
Accessories	
Ethernet interface unit	ERT 30/60

## Monitor model guide

**1**

### HEIGHT & WIDTH

MAXIMUM MONITOR DIMENSIONS  
(ULS1 between 15" to 19")/  
(ULS2 between 19" to 24")

475 [18,7] ULS1 /  
570 [22,4] ULS2

\* WITHOUT STAND, NOT ALLOWED

**2**

### THICKNESS

(A) VERTICAL INPUTS  
(B) HORIZONTAL INPUTS  
VALID FOR ULS1 AND ULS2

58 [2,28]      38 [1,49]

\*WITH x4 SPACERS INCLUDED

**3**

### VESA POSITION

STANDARD VESA 75 AND VESA 100 RESTRICTIONS FOR CORRECT FIT BETWEEN VESA POSITION AND MONITOR DIMENSIONS. \* FOR COOLING HOLES IN THIS PART, PLEASE INFORM US.

MAX. ULS1-115 [4,5]  
ULS2-136 [5,35]

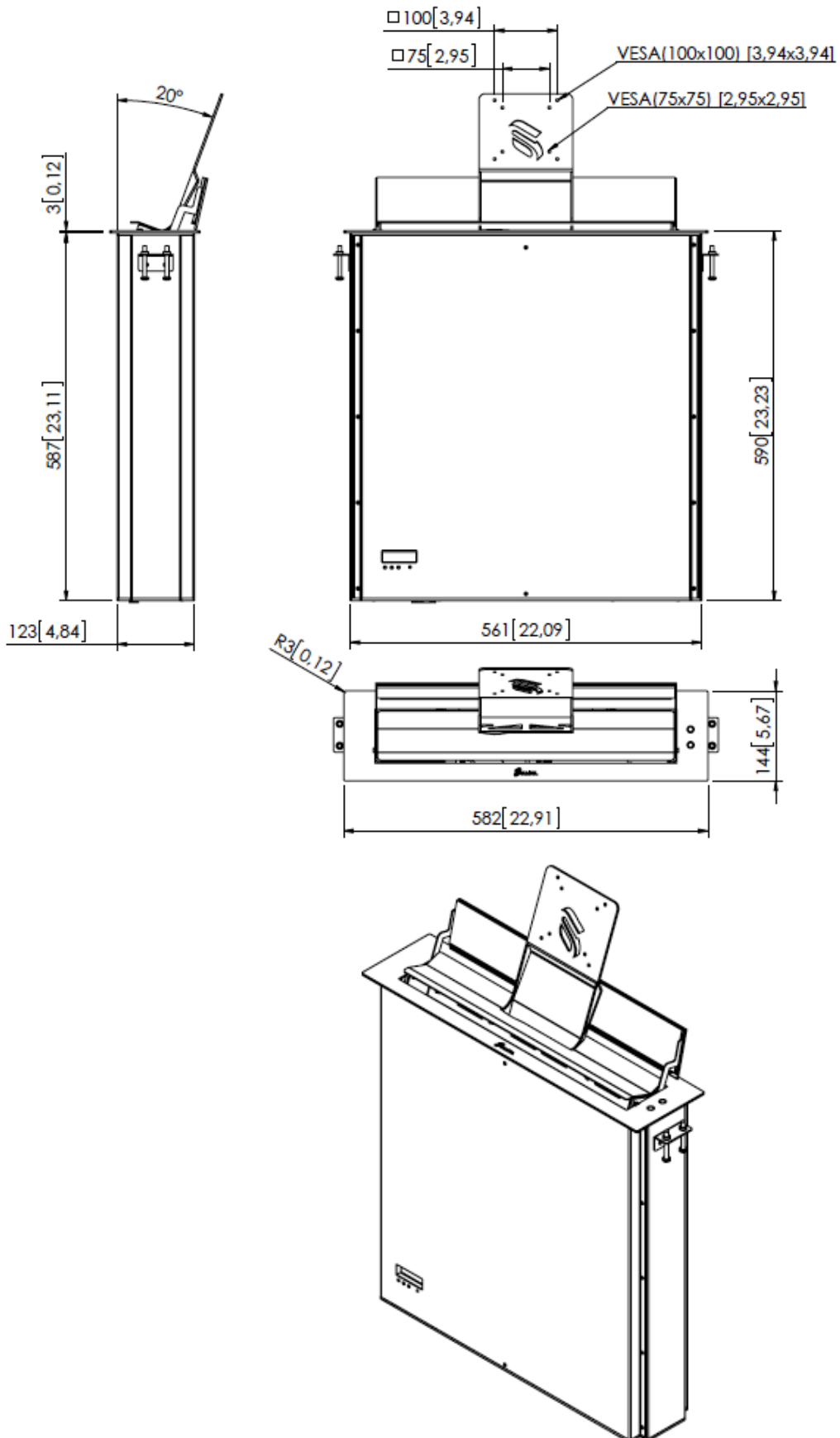
MAX. ULS1-115 [4,5]  
ULS2-136 [5,35]

MAX. ULS1-103 [4,05]  
ULS2-123 [4,84]

MAX. ULS1-103 [4,05]  
ULS2-123 [4,84]

General dimensions

ULS1



General dimensions

ULS2

