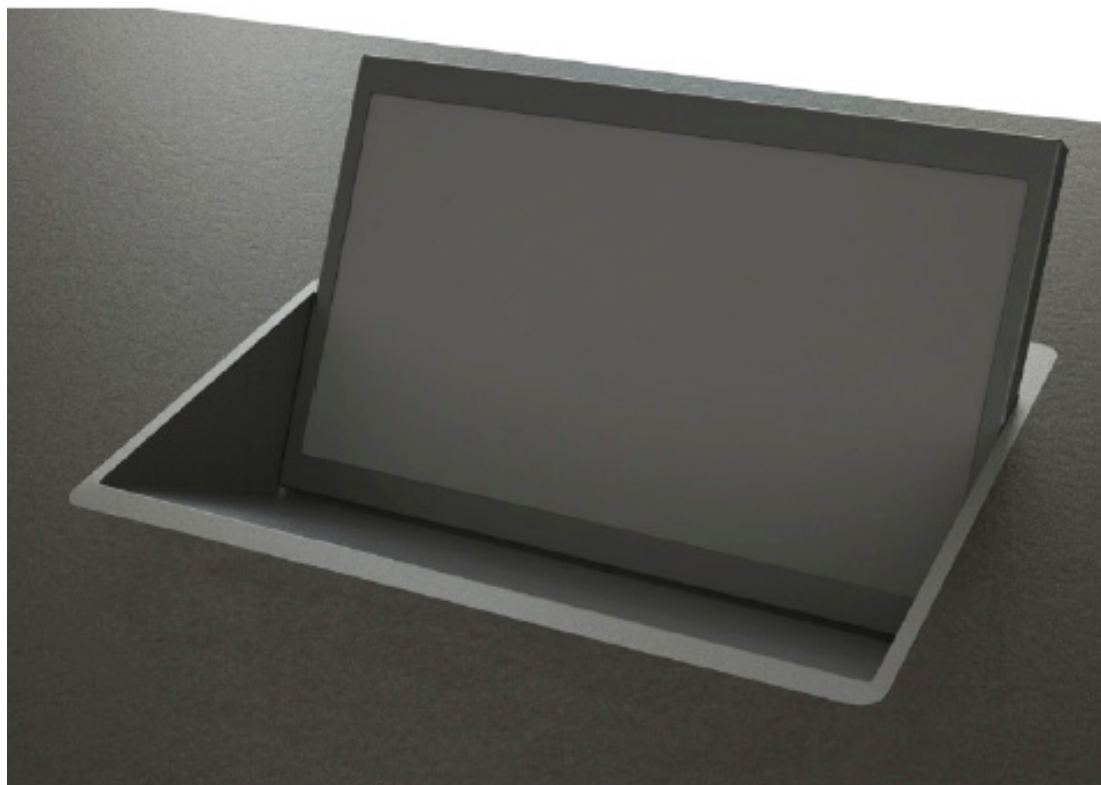




Albiral Interpreter Video Monitors

Fixed tilt angle monitors



Albiral Interpreter Video Monitors are fixed built-in displays specially designed to support users with video contents when there is also a need to have a good view of the room. They offer a fixed tilt angle which is conceived to offer the best ergonomics, providing a direct line of vision straight to the action. The reduced height of the monitors allows to see each other while using the screen, making it easier to develop a smooth, collaborative and participative meeting when working together.

Albiral Interpreter Video Monitors are ideal to be integrated in meeting and conference rooms and interpreter booths, where space gets fully optimised with this unobtrusive solution.

Advanced top features

- Reduced height allowing a wide vision field
- 34° fixed tilt
- Extremely easy installation
- Reliable and durable solution
- Flexible video connectivity

A boost to the room

- The built-in design opens up the vision field
- The Full HD resolution offers a perfect video image
- General visibility and focus points are strongly enhanced
- Alternative video contents can be analysed together with the room view

Robust and ergonomic

Albiral Interpreter Video Monitors integrate the most advanced technology and a first level Full HD screen, assuring a high quality product combining utility and durability. They are made of powder coated steel, resulting in a robust housing with a resistant finish that contributes to the long life of the equipment.

Albiral Interpreter monitors also offer great ergonomics to the user. Their 34° fixed tilt is an optimal viewing angle to work both watching the whole room and analysing data or presentations on the screen. As they are built-in into the table surface, space is optimised to the maximum and the visual field remains wide open to users.

The monitors are very easy and simple to install, assuring a quick and trouble-free integration in the furniture.

Displaying your desired video

Albiral Interpreter monitors include the most usual connection systems to ensure a total compatibility to admit all types of video contents. HD-SDI is a high definition digital component serial interface which allow the display of real-time camera video transmitting an uncompressed digital image. Other systems integrated are ARGB, HDMI and DisplayPort connectors, allowing to use the video source that best suits the user resources and needs.

Supplementary features allowed by this monitor extend the functionalities of the device:

Touch screen	The touch screen offers an interactive tool to select the desired options in a quick and direct way.
RS-232	Interpreter monitors can also integrate the RS-232 protocol, a system to set-up, control and diagnose the display remotely.
OOB	A special button for turn on/off functions can be integrated on the cover plate, allowing a fast start of the unit at just the push of a button.
SSB	A special button to select the source to display on screen can also be integrated on the cover plate, creating an easy path to view the desired contents.

General description

Albiral Interpreter Video Monitor is a 15.6" fixed display designed to be integrated in desks with an easy installation.

It is made of powder coated steel and provides a 34° fixed tilt. It is built-in into the desk surface, leaving free a wide vision field.

HD-SDI, ARGB, HDMI and DisplayPort video inputs integrated.

The monitor can integrate a touch screen and a remote control for the unit, as well as optional buttons for power on/off and source selection.

Product specifications

Screen	
Size	15.6" Full HD TFT Active Matrix LED Backlight
Resolution	1920 (h) x 1080 (v)
Brightness	450 cd/m2
Contrast ratio	800:1
Pixels	0.17925 (h) x 0.17925 (v) mm
Viewing angle	85°/85° (u/d) - 85°/85° (l/r)
Viewing area	344.16 (h) x 193.59 (v) mm
LED backlight lifespan	50,000 hrs
Response time	Tr + Tf 25 ms
Temperature	Operating 0°C / +40°C Storage -20°C / +60°C

Materials	
Cabinet	Powder coated steel housing
Connections	
Data input	ARGB 15 pins
	HDMI
	DisplayPort
Video input	HD-SDI BNC (1 input)
Video output	HD-SDI BNC (1 output)
Electricity	
External power supply	100-240Vac, 47/63Hz, 12Vdc
Power consumption	35W

General dimensions

To be added soon.