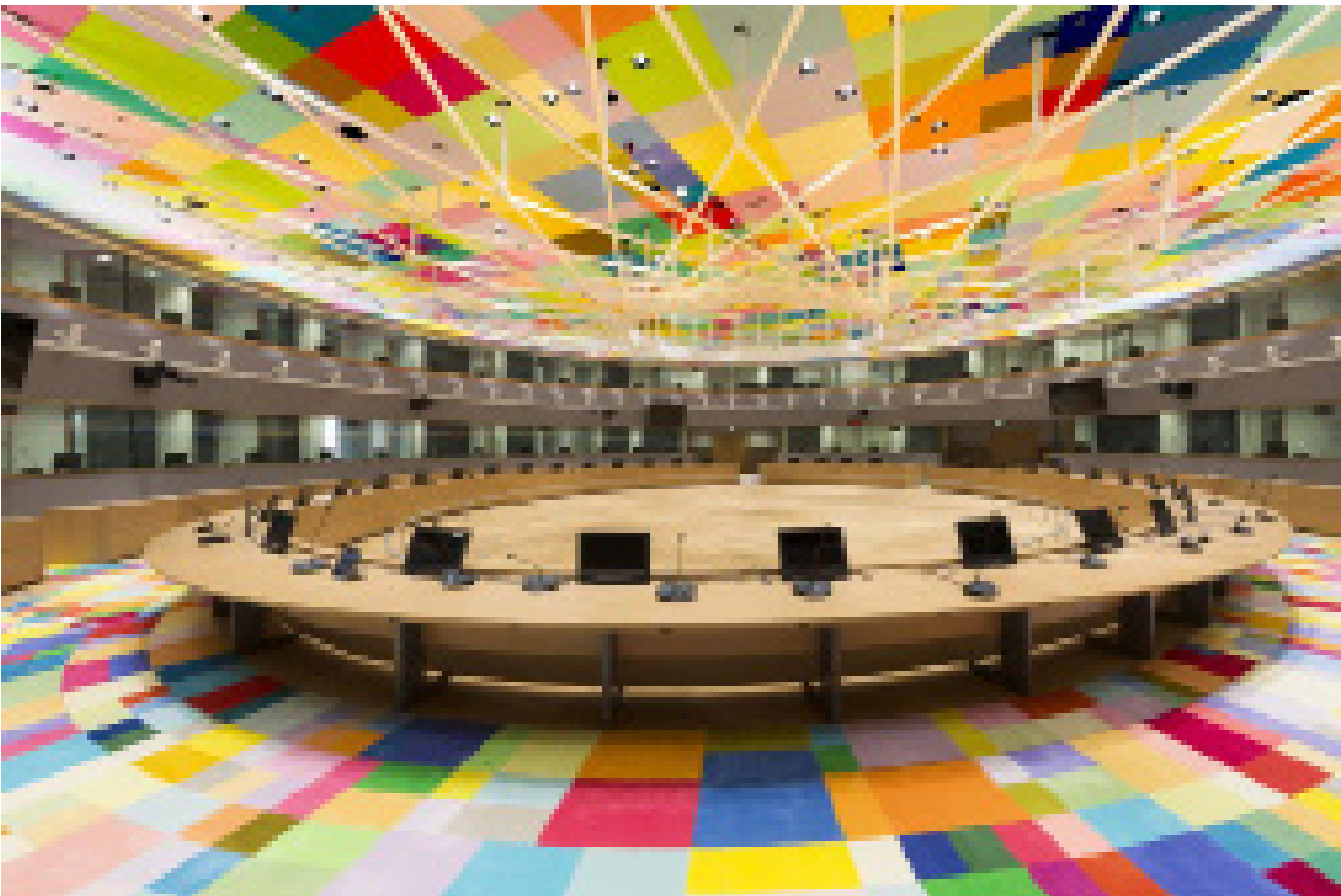




Since 1985



Trust in experience.

2023

Contents

03	About us
04	Smart Retractable Monitors
05	Universal Lift with Tilt
06	TabLift
07	A2 Manually Foldable Monitors
08	A2F Manually Foldable Monitors
09	Interpreter Video Monitors
10	Wall Mount Monitors
11	Flush Wall Mount Monitors
12	Our Projects

About us

Since its registration as a brand in February 1985, Albiral has not stopped reinventing itself. It succeeded as a brand of cathode-ray tube colour televisions during the 1980s and became a professional monitors manufacturer during the second half of the 1990s.



After dominating the living room of thousands of Spanish households, the firm decided to adapt its production to professional monitors and embark on the adventure of opening new export markets. The domestic television market was saturated and the company had to specialise in a niche product and not a mass market one. Albiral had the know-how, the structure and the capabilities needed to adapt to a new market segment in which durability, robustness, quality and flexibility of products played a decisive role.

During the 90s, Albiral launched a wide range of professional monitors to the market; available in different sizes, with different features and with different personalisation options. Video monitors, data monitors, multimedia monitors, monitors for videowall and Open Frame Albiral monitors had great acceptance in transport environments, training centres, museography, broadcast, CCTV and information dissemination.

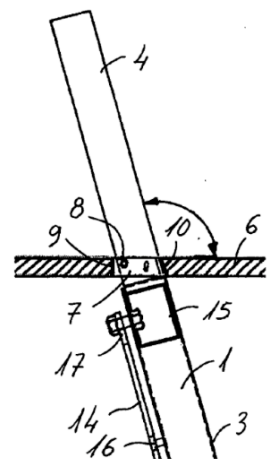


At the beginning of 2000, Albiral carried on with its process of continuous adaptation to a constantly evolving environment. The arrival of flat screens technology led the company to develop a whole range of LCD monitors, mainly for transport, museums and broadcast applications. Multiscreen monitors, racks with screens of different sizes, monitors for industrial and aggressive environments...

And then in 2004 the company made its bet for the development of retractable motorised monitors for furniture integration. For more than fifteen years the brand has manufactured solutions in which mechanical systems and technology get combined to offer robust, beautiful and furniture integrating systems to help decision-making and enhance communication in meeting and conference rooms and all workspaces.

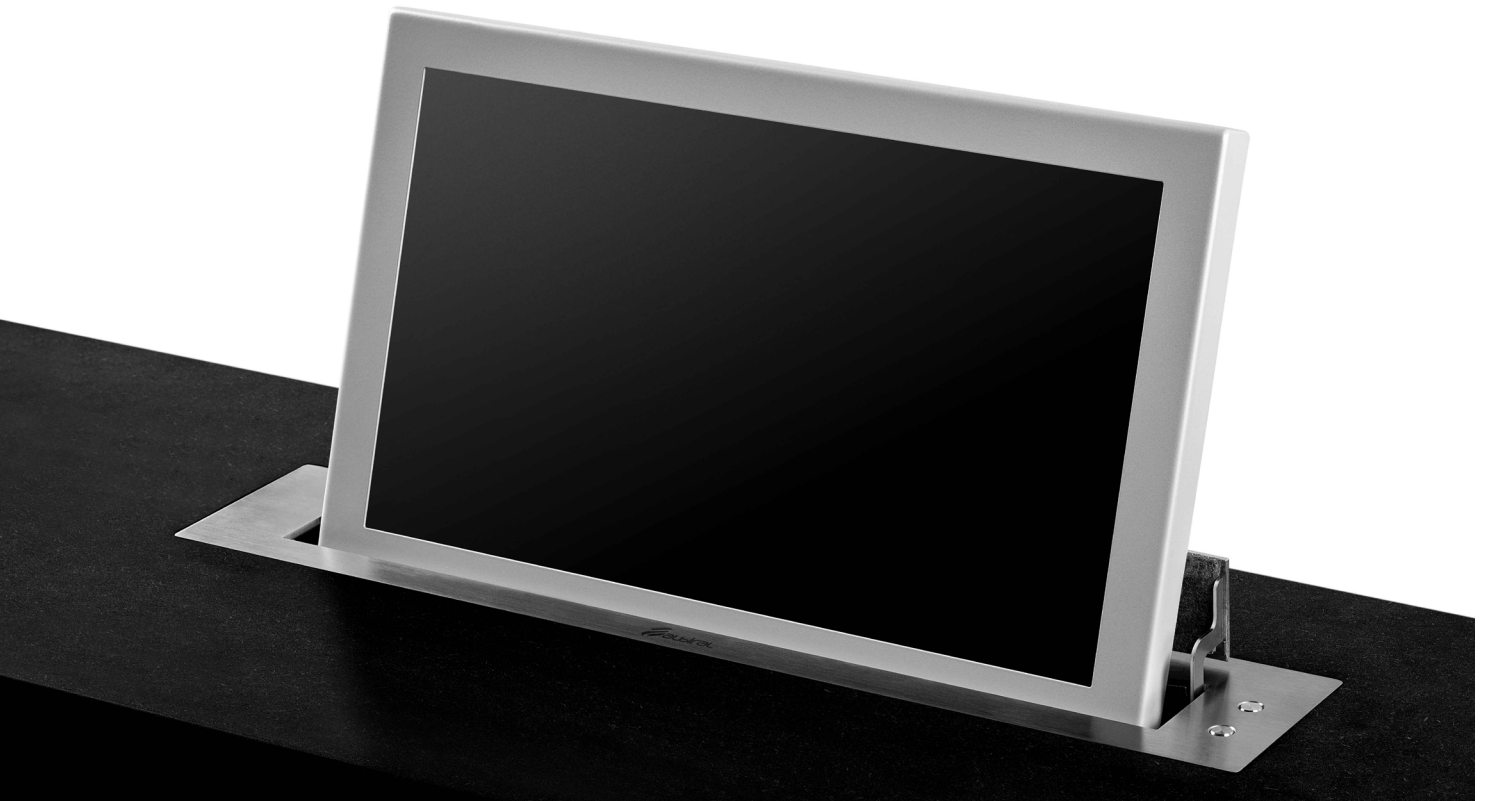
Currently, Albiral offers a wide range of products with proven robustness and reliability, advanced features and a contemporary and customisable design with multiple applications:

- Interpreter booths
- Meeting rooms
- Conference rooms
- Reception and welcome areas
- Auditorium
- Training rooms



More than 20 years' experience delivering custom AV solutions

Smart Retractable Monitors



Smart Retractable Monitors combine perfectly style and technology to create unique meeting and conference rooms with all the best and brightest. This professional monitor range provides an innovative and flashy design with exceptional features, setting up inspiring spaces where ideas flow, versatility is unlimited and the user experience breaks out to be remembered.

Robust and reliable, unobtrusive and flexible, ergonomic and astonishing, Smart Retractable Monitors integrate perfectly into the interior design of the room, disappearing inside the furniture when not needed.

The Smart variable speed system makes the monitor to appear smoothly from the desk, reaching a faster cruise speed when rising to finally slow down again to adjust perfectly to the ergonomic 20° tilt work position.

The passive cover plate opens elegantly being pushed by the monitor itself with a soft and accurate movement.

An internationally patented lift and tilt system allows the use of only one engine for both movements, thus reducing noise and maintenance.

Smooth, silent and harmonic drive

- Automatic 20° tilt
- Single engine for up/down and tilt movements
- 5 years limited warranty
- Extremely silent
- DVI-I and DVI-D video inputs
- HDCP compliant
- Maintenance free
- Energy saving design
- Security system
- Serial control & Remote diagnose
- Wireless connectivity for setup and control
- AH-AMMC Auto Mechanical Movement Calibration
- Sizes: 15", 17", 19" and 22"

Universal Lift with Tilt



Universal Lift with Tilt is a Universal Lift System (ULS) allowing to transform standard screens into a retractable monitor that can be integrated sleekly in conference rooms, auditoriums or training rooms. Specially designed for education applications, ULS helps to create collaborative and flexible learning spaces, increasing the audience immersive engagement.

This ULS becomes a smart complete solution providing a screen to review and analyse closely documents, data or presentations during lectures or conferences in a convenient and easy way.

The elegance of the ULS patented automated movements contributes to set up a distinctive purpose-built environment and the monitors can be stored safely inside the table when not needed leaving the surface clean and free.

ULS is compatible with most pc screens and monitor brands on the market. This motorised lift system can be used for flat screens between 15" and 24". The support to attach the monitor to the lift follows measurements established in VESA standard mounting system, so a perfect adjustment is absolutely guaranteed.

Universally genuine

- Reliable and durable motorised lift system for third party monitors
- Stainless steel cover plate with 2 buttons (up/down)
- 20° automatic tilt
- Interactive Setup Display
- 5 years limited warranty
- Protection cabinet for the monitor & cable management system
- Remotely control & Remote diagnose
- Customisable cover plate (logo, colour, USB, other connectors)
- USB for firmware upgrade
- Wireless connectivity for setup and control
- Available for most VESA monitors from 15" to 24"

TabLift



The TabLift is a motorised docking station with optional powering, enabling to hide a tablet within the furniture thanks to a silent and harmonic motorised movement that discreetly conceals it when not in use. The cover plate is made of brushed stainless steel ensuring durability and elegance. The tablet will be raised by pushing the buttons on the cover plate or remotely via RS422 and the tablet can be manually rotated from 0 to 90 degrees when in the docking station allowing the tablet to be placed both vertically and horizontally while an advanced fixing mechanism ensures its steady position.

Optionally, the system is available with an embedded power connector from each tablet manufacturer.

Easy to read Interactive Set-Up Display (ISD) 1,6" LCD display for address setup and status monitoring. Safety system that detects obstructions, stopping the unit. External power supply with 4-Pin XLR4 connector. Bottom connectivity for easy access and removal of the motorised docking station without need to disconnect it. TabLift housing total depth is 589 mm, plus additional spacing for connectors. Adjustable mechanical parameters through AHnet or ISD for calibration and adjustment of mechanics. Diagnostic readout on ISD for increase service and support.

Optimising the desk space

- Motorised lift system for tablets
- Automatic 20° inclination
- Revolving system for horizontal and vertical positions
- Passive cover plate
- Interactive Setup Display
- Maintenance free
- Serial control & Remote diagnose

A2 Manually Foldable Monitors



Elegance on standard furniture

- Manually foldable monitor
- Adjustable viewing angle to 110°
- Ready for desk mounting
- Large free working space on the surface
- No visible cables
- Low space required under the table
- Auto-power on/off
- HDCP compliant
- Easy installation and maintenance free
- Energy saving design
- Optional touch screen
- Sizes: 17" and 22"

A2 Manually Foldable Monitors are the perfect solution to create flexible and versatile tables needing to optimise the available space. They are elegant displays that enhance participation, creativity and co-working in dedicated areas and they can be easily folded down to leave a direct line of sight to the other participants or events taking place in the room. Furthermore, the reduced space needed for their installation allows users to have a large cable-free surface to work using both the screen and other materials over the desk.

With a discreet and classic design, A2 monitors turn technology into an appealing cutting edge system which is able to perform at the highest standard while generating a memorable user experience.

A2 monitors favour a pleasant atmosphere improving creativity and participation, thus decision-making tasks are powered in meeting and conference rooms. They also serve as an interactive and efficient support tool during presentations in auditoriums or institutions and, as they can be completely folded when not needed, make the most of limited space in interpreter booths.

A2 monitors provide a top video contents source display for small group meetings in huddle rooms and their versatility offers unobtrusive and advanced technology to nowadays modern courtrooms. Their amazing look is also worth a shocking first impression, so they are also an excellent choice to welcome visitors entering reception areas.

A2F Manually Foldable Monitors



Space optimising displays

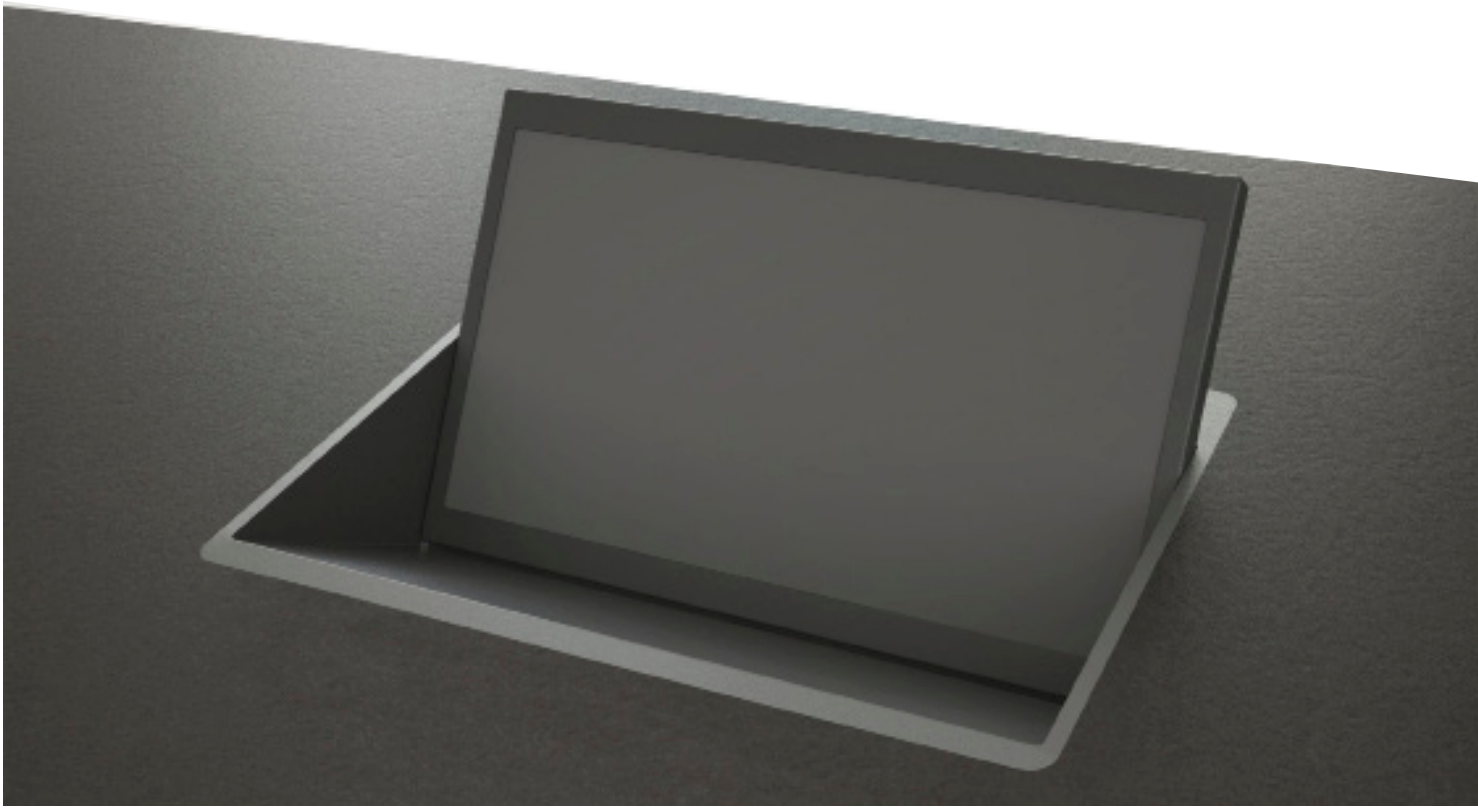
- Manually foldable monitor up to 110°
- Optimised desk space
- HDCP compliant
- Reliable and durable solution
- Multiple inputs
- Ready for desk mounting
- Minimum space required under the surface
- Storage position flush with the table
- Auto-power on/off
- Sustainable and long life equipment
- Energy saving and maintenance free installation
- Sizes: 17"

A2F Manually Foldable Monitors are space optimising displays that can be folded when not needed, leaving a clean and free desk surface. The monitors can be used for multiple applications, providing high definition video contents and real time information while offering a good view of the room when requested by the user. A2F Manually Foldable Monitors get closed with the screen facing down, being safely stored inside the table, whose surface remains absolutely flat and available for other purposes.

The elegance and hi-tech functionalities of these monitors add style and total effectiveness to the room, generating the perfect environment to enhance creativity, collaboration and productive business results.

- > Table space gets fully optimised
- > The Full HD resolution offers a perfect video image
- > The manually foldable design opens up completely the vision field
- > Monitors can be safely stored inside the table, which remains free for other uses
- > Displays can be completely flush with the table, allowing a clean and nice desk surface
- > A perfect fit in several spaces: meeting and conference rooms, interpreter booths, auditoriums, hotels and reception areas, huddle rooms and courtrooms

Interpreter Video Monitors



Interpreter Video Monitors are fixed built-in displays specially designed to support users with video contents when there is also a need to have a good view of the room. They offer a fixed tilt angle which is conceived to offer the best ergonomics, providing a direct line of vision straight to the action. The reduced height of the monitors allows to see each other while using the screen, making it easier to develop a smooth, collaborative and participative meeting when working together.

Interpreter Video Monitors are ideal to be integrated in meeting and conference rooms and interpreter booths, where space gets fully optimised with this unobtrusive solution.

Interpreter Video Monitors integrate the most advanced technology and a first level Full HD screen, assuring a high quality product combining utility and durability. They are made of powder coated steel, resulting in a robust housing with a resistant finish that contributes to the long life of the equipment.

Interpreter Video Monitors also offer great ergonomics to the user. Their 34° fixed tilt is an optimal viewing angle to work both watching the whole room and analysing data or presentations on the screen. As they are built-in into the table surface, space is optimised to the maximum and the visual field remains wide open to users.

A boost to the room

- Reduced height allowing a wide vision field
- Fixed tilt at 34°
- Easy to install
- Reliable and durable solution
- Flexible video connectivity
- The built-in design opens up the vision field
- The Full HD resolution offers a perfect video image
- General visibility and focus points are strongly enhanced
- Alternative video contents can be analysed together with the room view
- Trouble-free integration in the furniture
- HDCP compliant
- Sizes: 15", 17" and 22"

Wall Mount Monitors



Entertaining and informative

- On Wall Monitors
- Meeting information provider
- Space optimising on-wall installation
- Touch screen available
- Integrated Wall Mount
- Security anti-theft locking system
- HDCP compliant
- DVI-I and DVI-D video inputs
- Optional touch screen
- Polycarbonate screen protector available
- Optional WiFi
- Can integrate a built-in industrial PC
- Sizes: 15", 17", 19" and 22"

Integrating monitors on the wall is a convenient space optimising solution specially conceived to enhance the user experience. When installed in reception and public areas inside hotels, office and commercial buildings, museums and visitor or business centres, they become a part of a friendly eye-catching space providing positive feelings to visitors. Wall Mount Monitors can be discreetly installed on the wall and deliver convenient information, as well as personalised welcome messages or corporate presentations.

Wall Mount Monitors are also ideal to offer relevant meetings information when placed outside a conference or purpose-built room, a place where they will undoubtedly catch the eye of the public. They can show details about the session taking place inside, being extremely helpful and engaging for attendees to know schedules, programmes or other general information of interest. Wall Mount Monitors become an entertaining feature standing out in these spaces while acting as an interactive communication display for users.

The displays are robust and resistant, all set for the busy areas where they are installed. These monitors serve users with advanced technology ready to play in a very own and useful way, adding a distinctive smart touch to their time in a particular building or meeting and working up an awesome experience to remember.

Flush Wall Mount Monitors



Integrating monitors in the wall is a convenient space optimising solution specially conceived to enhance the user experience. When installed in reception and public areas they become a part of a friendly eye-catching space providing positive feelings to visitors. Flush Wall Mount Monitors can be discreetly installed in the wall and deliver convenient information, as well as personalised welcome messages or corporate presentations.

Flush Wall Mount Monitors are also ideal to offer relevant meetings information when placed outside a conference or purpose-built room. They can show details about the session taking place inside, being extremely helpful and engaging for attendees to know schedules, programmes or other general information of interest.

Installing a monitor on the wall has many advantages both for the user and the space itself. The screen gets fixed at a specific height conveniently placed for a comfortable quick user activity without obstructing the area. The monitor does not occupy extra space, as it is appropriately hung and it remains perfectly integrated vertically in the wall surface.

The display is also equipped with a practical mounting box to install the equipment and the screen includes a tool less front mounting system.

Fully-equipped technology

- In Wall Monitors
- Meeting information provider
- Space optimising in-wall installation
- Flush with the surface
- Touch screen available
- Tool-less front mounting system
- Includes mounting box
- HDCP compliant
- DVI-I and DVI-D video inputs
- Optional touch screen
- Polycarbonate screen protector available
- Optional WiFi
- Can integrate a built-in industrial PC
- Sizes: 15", 17", 19" and 22"

Our projects



- > Banco de España. Spain
- > Korek Telecom. Iraq
- > Universidad de los Andes. Colombia
- > Farm Credit. USA
- > Council of the European Union. Belgium
- > Conseil Départemental de la Marne. France
- > European Commission. Belgium and Luxembourg
- > European Parliament. Belgium and Luxembourg
- > European Court of Justice. Luxembourg
- > Courts of Jahra and Farwaniya. Kuwait
- > Ministry of Higher Education. Saudi Arabia
- > Palacio Legislativo de San Lázaro. México
- > Muscat Parliament. Oman
- > HCA Budapest. Hungary
- > Caisse Primaire D'assurance Maladie Lens. France
- > CPAM Arras. France
- > CAF Amiens. France
- > CPAM 77. France
- > Lisbon Parliament. Portugal
- > Faculdade de Medicina de Lisboa. Portugal
- > Caixabank. Spain
- > Cuatrecasas. Spain
- > Uría Abogados. Spain
- > Cajamar. Spain
- > Casa Árabe. Spain
- > Jerónimo Martins Group. Portugal
- > GNR (Guardia Nacional Republicana). Portugal
- > Abreu Advogados. Portugal
- > Universidade do Porto. Portugal
- > Centro Hospitalar Psiquiátrico de Lisboa. Portugal
- > IBS – Institute of Science and Innovation for Bio-Sustainability. Portugal



Since 1985

Quality, performance, durability and experience.

Albiral is a registered brand of Albiral Display Solutions
ALBIRAL DISPLAY SOLUTIONS, S.L.

Headquarters

Fàtima, 25
Sant Hipòlit de Voltregà
08512 Barcelona. Spain
Tel. +34 938 502 376
Fax +34 938 502 550

Barcelona

Prats de Molló, 13
08021 Barcelona.Spain
Tel. +34 935 324 424
Fax +34 938 502 550

Madrid

Vázquez de Mella, 23
28017 Madrid.Spain
Tel. +34 913 681 190
Fax +34 913 681 197

París

11 Rue du Commandant Jean Duhail
94120 Fontenay Sous Bois. France
Tel. + 33 777 922 364

marketing@albiral.com
www.albiral.com

